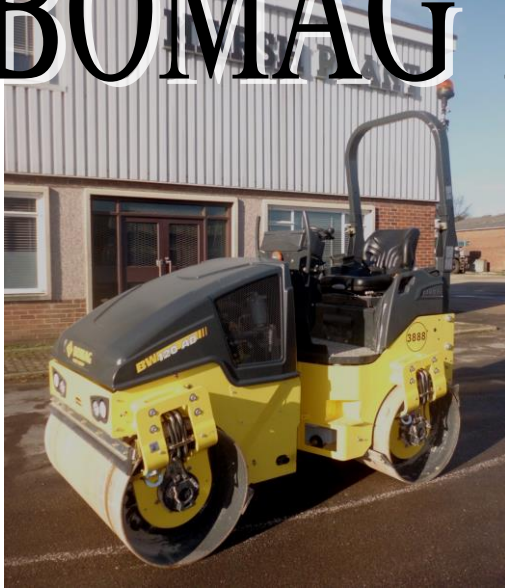


BOMAG 120AD-5



Technical Data

Shipping dimensions in m3	without ROPS	with ROPS
BW 100 AD-5	4,902	6,962
BW 120 AD-5	5.816	8.261

Technical Data

	BOMAG BW 100 AD-5	BOMAG BW 120 AD-5
Weights		
Operating weight w. ROPS CECE	2.500 kg	2.700 kg
Average static linear load CECE	12,5 kg/cm	11,3 kg/cm
Grossweight	3.300 kg	3.500 kg
Dimensions		
Working width	1.000 mm	1.200 mm
Track radius, inner	2.550 mm	2.450 mm
Driving Characteristics		
Speed	0- 10,0 km/h	0- 10,0 km/h
Working speed with vibration	0- 10,0 km/h	0- 10,0 km/h
Max. gradeability without/with vibr.	40/30 %	40/30 %
Drive		
Engine manufacturer	Kubota	Kubota
Type	D 1703	D 1703
Emission stage	3a /4i	3a /4i
Cooling	water	water
Number of cylinders	3	3
Performance ISO 14396	24,3 kW	24,3 kW
Performance SAE J 1995	32,6 hp	32,6 hp
Speed	2.600 min-1	2.600 min-1
Speed adjustment 1	2.500 min-1	2.500 min-1
Speed adjustment 2	2.600 min-1	2.600 min-1
Electric equipment	V 12	V 12
Driven drum	front + rear	front + rear
Brakes		
Service brake	hydrot.	hydrot.
Parking brake	hydromec.	hydromec.
Steering		
Steering system	oscil.artic.	oscil.artic.
Steering method	hydrot.	hydrot.
Steering / oscillating angle +/-	32/10 grad	32/10 grad
Crab walk	0- 50	0- 50
Exciter system		
Vibrating drum	front + rear	front + rear
Drive system	hydrot.	hydrot.
Frequency	63/67 Hz	63/67 Hz
Amplitude	0,49/0,49 mm	0,51/0,51 mm
Centrifugal force	30/34 kN	36/41 kN
Sprinkler System		
Type of sprinkling	pressure	pressure
Capacities		
Fuel	35,0 l	35,0 l
Water	205,0 l	205,0 l

Technical modifications reserved. Machines may be shown with options.

Dimensions in mm

	A	B	C	D	H	H2	K	L	O	S	W
BW 100 AD-5	1752	1072	523	700	1808	2568	254	2529	36	13	1000
BW 120 AD-5	1752	1272	523	700	1808	2568	254	2529	36	13	1200

Standard Equipment

- Hydrostatic travel and vibration drive
- Pressure sprinkler system with interval switch
- Suspended operator's platform
- 2 scrapers per drum, spring loaded and tiltable
- Multi function travel lever
- Multi-function display incl. operating hour meter
- Water level electronic fuel gauge
- Emergency STOP
- Individual control, vibration
- Intelligent Vibration Control (IVC)
- Integrated stowage compartment
- Adjustable operator's seat
- Lashing eyes, galvanized
- Back-up alarm
- Single point lifting device
- V-belt protection
- Vandalism protection
- Lockable engine hood made of composite material
- Working lights front and rear
- 12V socket
- Seat contact switch
- Plastic water tank

Optional Equipment

- * Foldable ROPS incl. seat belt
- Edge cutter
- Sliding seat incl. double travel lever
- Gravel scatterer
- Battery disconnect switch
- Indicator and hazard lights
- Rotary beacon
- Optional lighting on ROPS
- Sun roof, rigid
- Sun roof, foldable with ROPS
- Weather protection for sun roof
- Special painting
- Seat heating
- Backup warning buzzer with broadband technology
- Environmentally compliant hydraulic oil
- Tool kit
- Theft protection
- BOMAG TELEMATIC
- ECONOMIZER

* Standard delivery with CE conformity (valid within European Union)

