

KUBOTA KX080-4



MARSH PLANT®

NEW LANE, HAVANT, HAMPSHIRE, PO9 2LZ
Telephone 023 9248 2323

Millbrook Road, Southampton
Hampshire, SO15 0LB
Telephone 023 8052 2600
southampton@marshplant.com

www.marshplant.com

Drakes Drive, longCrendon
Aylesbury, HP18 9BA
Telephone 01844 204000
longcrendon@marshplant.com

Cabot Lane, Creekmoor, Poole
Dorset BH17 7BX
Telephone 01202 642820
poole@marshplant.com

7b Watercombe Park
Gazelle Road, Yeovil
Somerset, BA20 2HL
Telephone 01935 415970
yeovil@marshplant.com

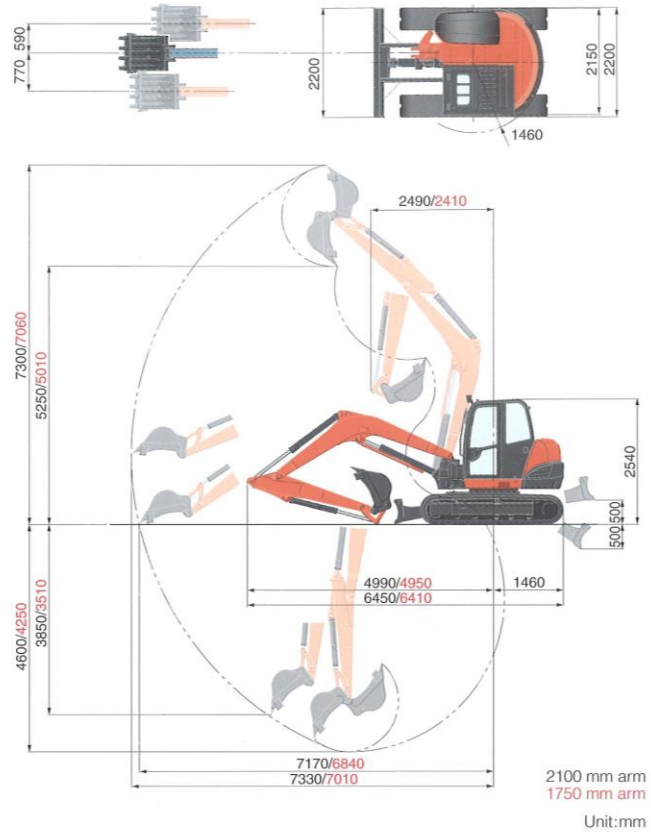
Wallingford Road, Uxbridge
Middlesex UB8 2SS
Telephone 01844 204000
longcrendon@marshplant.com

SPECIFICATIONS

*with rubber shoe, JPN bucket and 2100 mm arm

Machine weight	kg	8195		
Operating weight	kg	8270		
Bucket capacity, std. SAE/CECE	m ³	0.25/0.21		
Bucket width	With side teeth	mm	800	
	Without side teeth	mm	700	
Engine	Model	V3307-CR-TE4		
	Type	Water-cooled, diesel engine E-CDIS (with CRS and DPF)		
	Output ISO9249	PS/rpm	65.0/2000	
		kW/rpm	47.8/2000	
	Number of cylinders	4		
	Bore × Stroke	mm	94 × 120	
Displacement	cc	3331		
Swivelling speed	rpm	9.5		
Rubber shoe width	mm	450		
Tumbler distance	mm	2300		
Dozer size (width × height)	mm	2200 × 500		
Hydraulic pumps	P1, P2	Variable displacement pump		
	Flow rate	ℓ/min	72.0 × 2	
	Hydraulic pressure	MPa (kgf/cm ²)	27.4 (280)	
	P3	Gear type		
	Flow rate	ℓ/min	66.6	
Max. digging force	Arm	kN (kgf)	38.1 (3880)	
	Bucket	kN (kgf)	65.2 (6650)	
Boom swing angle (left/right)	deg	70/60		
Minimum front swivel radius with boom swing (left/right)	2050/2380			
Auxiliary circuit (SP1)	Max. Flow rate	ℓ/min	100	
	Max. Hydraulic pressure	MPa (kgf/cm ²)	20.6 (210)	
Auxiliary circuit (SP2)	Max. Flow rate	ℓ/min	66.6	
	Max. Hydraulic pressure	MPa (kgf/cm ²)	20.6 (210)	
Hydraulic reservoir	ℓ	75		
Fuel tank capacity	ℓ	115		
Max. travelling speed	Low	km/h	2.7	
	High	km/h	4.9	
Ground contact pressure	kPa (kgf/cm ²)	34.6 (0.353)		
Ground clearance	mm	390		

WORKING RANGE



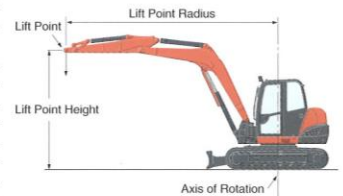
LIFTING CAPACITY

*With counter weight

Lift Point Height	kN (ton)											
	Lifting point radius (Min)			Lifting point radius (4m)			Lifting point radius (5m)			Lifting point radius (Max)		
	Over-front		Over-side	Over-front		Over-side	Over-front		Over-side	Over-front		Over-side
5m	1750 Arm			16.7 (1.70)	16.7 (1.70)	15.7 (1.60)						
	2100 Arm			14.2 (1.45)	14.2 (1.45)	14.2 (1.45)						
3m	1750 Arm			20.1 (2.05)	19.6 (2.00)	15.2 (1.55)	17.2 (1.75)	13.7 (1.40)	10.3 (1.05)			
	2100 Arm			18.1 (1.85)	18.1 (1.85)	15.2 (1.55)	16.2 (1.65)	13.7 (1.40)	10.8 (1.10)			
1.5m	1750 Arm			26.0 (2.65)	18.1 (1.85)	13.7 (1.40)	20.1 (2.05)	12.7 (1.30)	9.8 (1.00)	17.1 (1.74)	10.7 (1.09)	8.2 (0.84)
	2100 Arm			24.5 (2.50)	18.1 (1.85)	13.7 (1.40)	19.1 (1.95)	13.2 (1.35)	9.8 (1.00)	15.9 (1.62)	9.3 (0.95)	7.0 (0.71)
1m	1750 Arm			27.4 (2.80)	17.6 (1.80)	13.2 (1.35)	20.6 (2.10)	12.7 (1.30)	9.8 (1.00)			
	2100 Arm			26.5 (2.70)	17.6 (1.80)	13.2 (1.35)	20.1 (2.05)	12.7 (1.30)	9.8 (1.00)			
0m	1750 Arm			28.4 (2.90)	17.2 (1.75)	12.7 (1.30)	21.1 (2.15)	12.3 (1.25)	9.3 (0.95)			
	2100 Arm			28.4 (2.90)	17.2 (1.75)	12.7 (1.30)	21.1 (2.15)	12.3 (1.25)	9.3 (0.95)			
-1m	1750 Arm	37.7 (3.85)	37.7 (3.85)	37.7 (3.85)	27.4 (2.80)	17.2 (1.75)	12.7 (1.30)	20.1 (2.05)	12.3 (1.25)	9.3 (0.95)		
	2100 Arm	28.4 (2.90)	28.4 (2.90)	28.4 (2.90)	27.9 (2.85)	16.7 (1.70)	12.3 (1.25)	20.6 (2.10)	12.3 (1.25)	9.3 (0.95)		
-3m	1750 Arm											
	2100 Arm				16.2 (1.65)	16.2 (1.65)	12.7 (1.30)					

*Light weight version

Lift Point Height	kN (ton)											
	Lifting point radius (Min)			Lifting point radius (4m)			Lifting point radius (5m)			Lifting point radius (Max)		
	Over-front		Over-side	Over-front		Over-side	Over-front		Over-side	Over-front		Over-side
5m	1750 Arm			16.7 (1.70)	16.7 (1.70)	14.7 (1.50)						
	2100 Arm			14.2 (1.45)	14.2 (1.45)	14.2 (1.45)						
3m	1750 Arm			20.1 (2.05)	18.1 (1.85)	13.7 (1.40)	17.2 (1.75)	12.7 (1.30)	9.8 (1.00)			
	2100 Arm			18.1 (1.85)	18.1 (1.85)	14.2 (1.45)	16.2 (1.65)	12.7 (1.30)	9.8 (1.00)			
1.5m	1750 Arm			26.0 (2.65)	16.7 (1.70)	12.3 (1.25)	20.1 (2.05)	11.8 (1.20)	8.8 (0.90)	17.1 (1.74)	9.8 (1.00)	7.4 (0.75)
	2100 Arm			24.5 (2.50)	17.2 (1.75)	12.7 (1.30)	19.1 (1.95)	12.3 (1.25)	9.3 (0.95)	15.9 (1.62)	8.4 (0.86)	6.5 (0.67)
1m	1750 Arm			27.4 (2.80)	16.2 (1.65)	12.3 (1.25)	20.6 (2.10)	11.8 (1.20)	8.8 (0.90)			
	2100 Arm			26.5 (2.70)	16.7 (1.70)	12.3 (1.25)	20.1 (2.05)	11.8 (1.20)	8.8 (0.90)			
0m	1750 Arm			28.4 (2.90)	15.7 (1.60)	11.8 (1.20)	21.1 (2.15)	11.3 (1.15)	8.3 (0.85)			
	2100 Arm			28.4 (2.90)	15.7 (1.60)	11.8 (1.20)	21.1 (2.15)	11.3 (1.15)	8.3 (0.85)			
-1m	1750 Arm	37.7 (3.85)	37.7 (3.85)	35.8 (3.65)	27.4 (2.80)	15.7 (1.60)	11.3 (1.15)	20.1 (2.05)	11.3 (1.15)	8.3 (0.85)		
	2100 Arm	28.4 (2.90)	28.4 (2.90)	28.4 (2.90)	27.9 (2.85)	15.2 (1.55)	11.3 (1.15)	20.6 (2.10)	11.3 (1.15)	8.3 (0.85)		
-3m	1750 Arm											
	2100 Arm				16.2 (1.65)	16.2 (1.65)	11.8 (1.20)					



* Working ranges are with Kubota standard bucket, without quick coupler.
* Specifications are subject to change without notice for purpose of improvement.

Please note:
* The lifting capacities are based on ISO 10567 and do not exceed 75% of the static tilt load of the machine or 87% of the hydraulic lifting capacity of the machine.
* The excavator bucket, hook, sling and other lifting accessories are not included on this table.