

KUBOTA KX71-3



MARSH PLANT[®]

NEW LANE, HAVANT, HAMPSHIRE, PO9 2LZ

Telephone 023 9248 2323

www.marshplant.com

Millbrook Road, Southampton
Hampshire, SO15 0LB

Telephone 023 8052 2600

southampton@marshplant.com

Drakes Drive, longCrendon

Aylesbury, HP18 9BA

Telephone 01844 204000

longcrendon@marshplant.com

Cabot Lane, Creekmoor, Poole
Dorset BH17 7BX

Telephone 01202 642820

poole@marshplant.com

7b Watercombe Park
Gazelle Road, Yeovil
Somerset, BA20 2HL

Telephone 01935 415970

yeovil@marshplant.com

Wallingford Road, Uxbridge
Middlesex UB8 2SS

Telephone 01844 204000

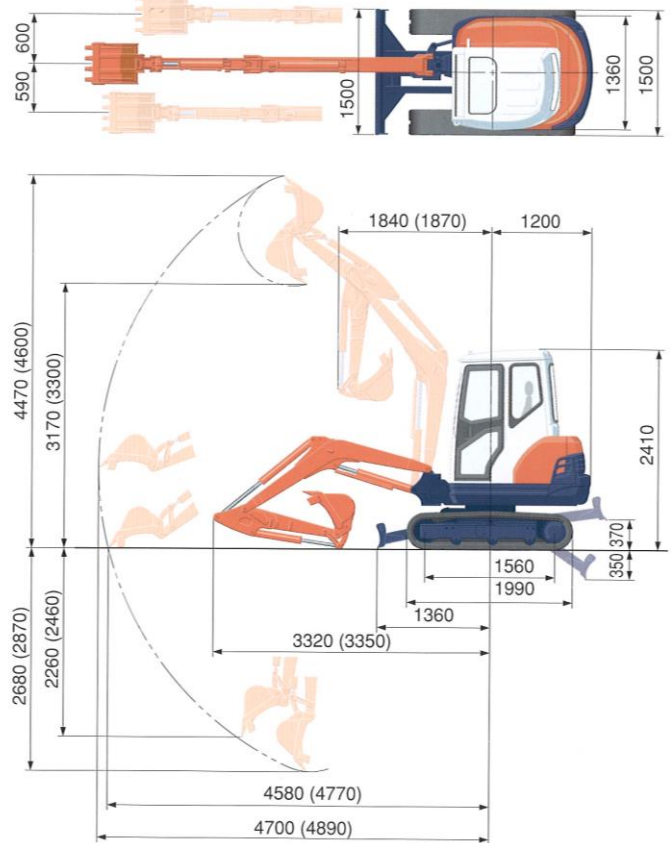
longcrendon@marshplant.com

SPECIFICATIONS

*Rubber shoe type

Machine weight	Cabin (Std. arm/Long arm)	kg	2790/2800	
	Canopy (Std. arm/Long arm)	kg	2685/2695	
Bucket capacity, std. SAE/CECE		m ³	0.07	
Bucket width	with side teeth	mm	505	
	without side teeth	mm	480	
Engine	Model	VI505-E2-BH-10EU		
	Type	Water-cooled, diesel engine		
	Output ISO9249	PS/rpm	27.5/2300	
		kW/rpm	20.5/2300	
	Number of cylinders	4		
	Bore x stroke	mm	78 x 78.4	
Displacement	cc	1498		
Overall length (Std. arm/Long arm)	mm		4520/4550	
Overall height	Cabin	mm	2410	
	Canopy	mm	2430	
Swivelling speed	rpm	9.4		
Rubber shoe width	mm	300		
Tumbler distance	mm	1560		
Dozer size (width x height)	mm		1500 x 300	
Hydraulic pumps	P1, P2	Variable displacement pump		
	Flow rate	ℓ/min	32.2+32.2	
	Hydraulic pressure	MPa(kgf/cm ²)	23.5 (240)	
	P3	Gear pump		
	Flow rate	ℓ/min	18.4	
	Hydraulic pressure	MPa(kgf/cm ²)	20.6 (210)	
Max. digging force	Arm (Std./Long)	kN (kgf)	17.5/16.2 (1790/1650)	
	Bucket	kN (kgf)	25.2 (2570)	
Boom swing angle (left/right)	deg	80/60		
Auxiliary circuit	Flow rate	ℓ/min	50.6	
	Hydraulic pressure	MPa(kgf/cm ²)	20.6 (210)	
Hydraulic reservoir	ℓ	34		
Fuel tank capacity	ℓ	45		
Max. travelling speed	Low	km/h	2.7	
	High	km/h	4.6	
Ground contact pressure	Cabin	kPa(kgf/cm ²)	26.5 (0.270)	
	Canopy	kPa(kgf/cm ²)	25.0 (0.255)	
Ground clearance	mm	305		

WORKING RANGE



(): Long Arm
Unit: mm

LIFTING CAPACITY

KX71-3(CAB) with standard arm: kN (ton)

Lift Point Height	Lifting point radius (2.5m)			Lifting point radius (3.5m)		
	Over-front		Over-side	Over-front		Over-side
	Blade Down	Blade UP		Blade Down	Blade UP	
2.0m	7.20 (0.73)	7.20 (0.73)	7.20 (0.73)	5.89 (0.60)	5.81 (0.59)	5.09 (0.52)
1.5m	8.95 (0.91)	8.95 (0.91)	8.15 (0.83)	6.32 (0.64)	5.72 (0.58)	5.00 (0.51)
1.0m	10.57 (1.08)	9.18 (0.94)	7.90 (0.81)	6.80 (0.69)	5.62 (0.57)	4.91 (0.50)
0m	11.79 (1.20)	8.88 (0.91)	7.57 (0.77)	7.29 (0.74)	5.49 (0.56)	4.78 (0.49)

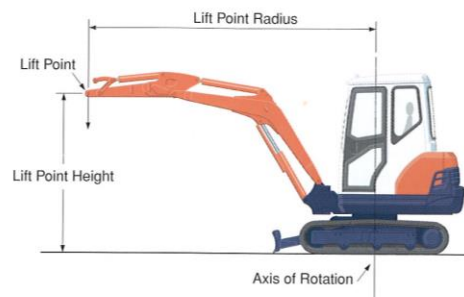
KX71-3(CAB) with long arm: kN (ton)

Lift Point Height	Lifting point radius (2.5m)			Lifting point radius (3.5m)		
	Over-front		Over-side	Over-front		Over-side
	Blade Down	Blade UP		Blade Down	Blade UP	
2.0m	6.38 (0.65)	6.38 (0.65)	6.38 (0.65)	5.45 (0.56)	5.45 (0.56)	5.10 (0.52)
1.5m	8.10 (0.83)	8.10 (0.83)	8.10 (0.83)	5.94 (0.61)	5.72 (0.58)	5.00 (0.51)
1.0m	9.86 (1.01)	9.20 (0.94)	7.87 (0.80)	6.48 (0.66)	5.60 (0.57)	4.88 (0.50)
0m	11.64 (1.19)	8.79 (0.90)	7.49 (0.76)	7.18 (0.73)	5.43 (0.55)	4.72 (0.48)

Please note:

* The lifting capacities are based on ISO 10567 and do not exceed 75 % of the static tilt load of the machine or 87 % of the hydraulic lifting capacity of the machine.

* The excavator bucket, hook, sling and other lifting accessories are not included on this table.



* Working ranges are with Kubota standard bucket, without quick coupler.

* Specifications are subject to change without notice for purpose of improvement.