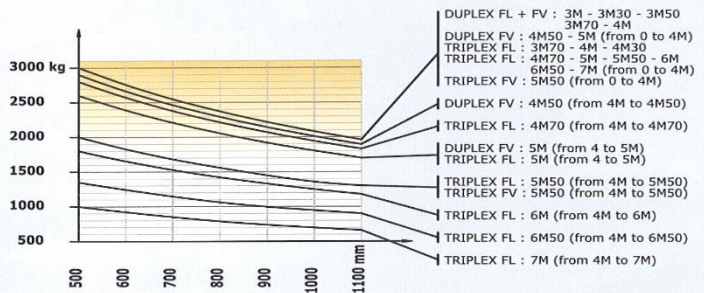


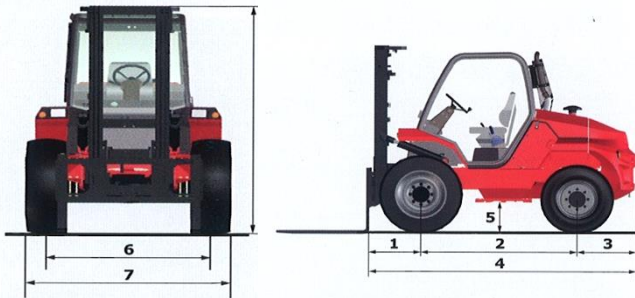
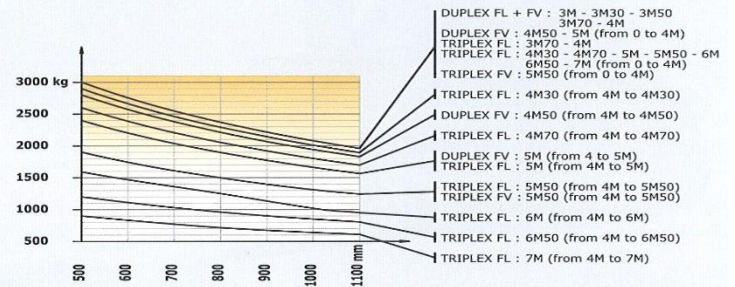
MANITOU M30-4



Without sideshift attachment



With sideshift attachment



	M30-2	M30-4	M50-2	M50-4
Lifting				
Max. capacity	3000 kg at 500 mm CDG		5000 kg at 600 mm CDG	
Lifting height (standard mast)	7.00 m		3.70 m	
Max. lifting height	7.00 m		6.00 m	
Unladen time				
Lifting	0.5 m/s		0.5 m/s	
Lowering	0.5 m/s		0.4 m/s	
Tyres				
Forward	14.5 R20 18PR MPT80 TL	400/70-20 150B T37 STAB TL	18-19.5 18PR 166A6 TL	18-22.5 163A8 MPT-06 TL
Backward	10R 17.5 134/132 M G291	10.5/80-18 10PR TG42 TL	10 R 17.5 134/132M G291	340/80 R18 XMCL 143A8
Braking				
Service brake	oil immersed multi-disc braking on front/rear axes			
Parking brake	oil immersed multi-disc mechanics on the front axle			
Engine				
Type	PERKINS - STAGE 3B			
Cubic capacity	PERKINS 854F-E34T			
Power	3400 cm ³			
Max. torque	75 HP / 55.5 kW			
Injection	318 Nm at 1400 rpm			
Cooling	direct water			
Laden drawbar pull	4670 daN	6290 daN	6090 daN	10220 daN
Transmission				
Gearbox	torque converter			
Reversing shift	mechanical			
Number of gears (forward/reverse)	electro-hydraulic			
Max. travel speed	22 km/h		24 km/h	
(may vary according to applicable regulations)				
Front axle differential lock	yes	no	yes	no
Control for 2/4 wheel drive	no	yes	no	yes
Controls	hydro-proportional levers for all movements			
Hydraulics				
Pump	gear pump		gear pump	
	97 l/min - 245 bar		97 l/min - 230 bar	
Capacities				
Hydraulic oil			80 l	
Fuel			85 l	
Unladen weight (with standard mast forks)	5290 kg	5485 kg	7920 kg	8190 kg
Dimensions				
1. Front wheel centre to carriage	0.70 m		0.77 m	
2. Wheelbase	1.99 m		2.06 m	
3. Rear wheel centre to rear face	0.76 m		0.92 m	
4. Overall length to carriage	3.44 m		3.75 m	
5. Ground clearance	0.37 m	0.38 m	0.36 m	0.43 m
6. Inside tyre width	1.55 m	1.52	1.60 m	1.62 m
7. Overall width	1.90 m	1.92 m	2.05 m	2.08 m
8. Overall height	2.45 m		2.42 m	
Standard forks (length x width x thickness)	1200 x 125 x 40 mm		1200 x 150 x 60 mm	
Turning radius	3.10 m	4.27 m	3.40 m	4.57 m
Tilt standard mast (forward/backward)	6° / 12°		15° / 15°	
Noise and vibration				
Noise at driving position (LpA)	76 dB			
Environmental noise (LwA)	104 dB			
Vibration to whole hand/arm	<2.5 m/s ²			
Vibration on driver's body	2 m/s ²			