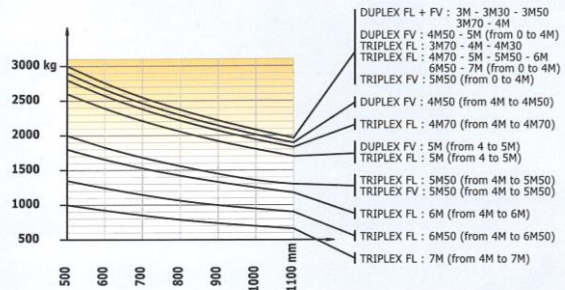


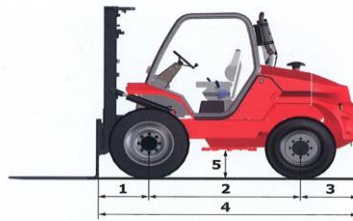
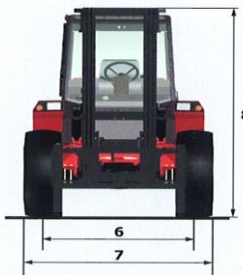
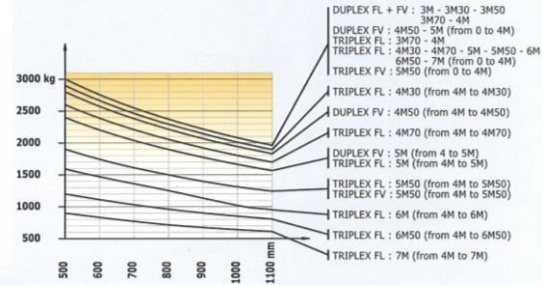
# MANITOU M30-4



## Without sideshift attachment



## With sideshift attachment



	M30-2	M30-4	M50-2	M50-4
<b>Lifting</b>				
Max. capacity	3000 kg at 500 mm CDG		5000 kg at 600 mm CDG	
Lifting height (standard mast)	7.00 m		3.70 m	
Max. lifting height	7.00 m		6.00 m	
<b>Unladen time</b>				
Lifting	0.5 m/s		0.5 m/s	0.4 m/s
Lowering	0.5 m/s		0.4 m/s	0.3 m/s
<b>Tyres</b>				
Forward	14.5 R20 18PR MPT80 TL	400/70-20 150B T37 STAB TL	18-19.5 18PR 166A6 TL	18-22.5 163A8 MPT-06 TL
Backward	10R 17.5 134/132 M G291	10.5/80-18 10PR TG42 TL	10 R 17.5 134/132M G291	340/80 R18 XMCL 143A8
<b>Braking</b>				
Service brake	oil immersed multi-disc braking on front/rear axles			
Parking brake	oil immersed multi-disc mechanics on the front axle			
<b>Engine</b>				
Type	PERKINS - STAGE 3B			
Cubic capacity	PERKINS 854F-E34T			
Power	3400 cm <sup>3</sup>			
Max. torque	75 HP / 55.5 kW			
Injection	318 Nm at 1400 rpm			
Cooling	direct water			
Laden drawbar pull	4670 daN	6290 daN	6090 daN	10220 daN
<b>Transmission</b>				
Gearbox	torque converter			
Reversing shift	mechanical			
Number of gears (forward/reverse)	electro-hydraulic			
Max. travel speed	22 km/h		24 km/h	
(may vary according to applicable regulations)				
Front axle differential lock	yes	no	yes	no
Control for 2/4 wheel drive	no	yes	no	yes
<b>Controls</b>	hydro-proportional levers for all movements			
<b>Hydraulics</b>				
Pump	gear pump		gear pump	
Hydraulic oil	97 l/min - 245 bar		97 l/min - 230 bar	
<b>Capacities</b>				
Fuel	80 l		85 l	
<b>Unladen weight (with standard mast forks)</b>	5290 kg	5485 kg	7920 kg	8190 kg
<b>Dimensions</b>				
1. Front wheel centre to carriage	0.70 m		0.77 m	0.76 m
2. Wheelbase	1.99 m		2.06 m	2.12 m
3. Rear wheel centre to rear face	0.76 m		0.92 m	0.86 m
4. Overall length to carriage	3.44 m		3.75 m	3.74 m
5. Ground clearance	0.37 m	0.38 m	0.36 m	0.43 m
6. Inside tyre width	1.55 m	1.52 m	1.60 m	1.62 m
7. Overall width	1.90 m	1.92 m	2.05 m	2.08 m
8. Overall height	2.45 m		2.42 m	2.43 m
Standard forks (length x width x thickness)	1200 x 125 x 40 mm		1200 x 150 x 60 mm	
Turning radius	3.10 m	4.27 m	3.40 m	4.57 m
Tilt standard mast (forward/backward)	6° / 12°		15° / 15°	
<b>Noise and vibration</b>				
Noise at driving position (LpA)	76 dB			
Environmental noise (LwA)	104 dB			
Vibration to whole hand/arm	<2.5 m/s <sup>2</sup>			
Vibration on driver's body	2 m/s <sup>2</sup>			