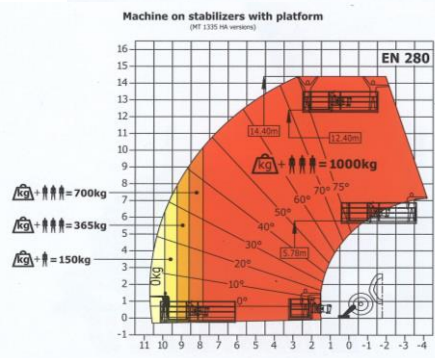
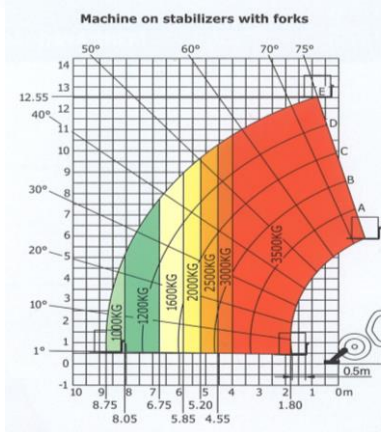
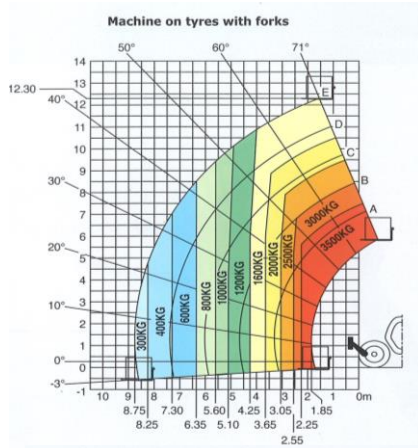


# MANITOU MT 1335



	MT 1335	MT 1335 H	MT 1335 HA
<b>Lifting</b>			
Max. capacity		3500 kg	
Max. lifting height		12.55 m	
Max. outreach		8.75 m	
Break-out force with bucket		6400 daN	
<b>Unladen time</b>			
Lifting		9.8 secs	
Lowering		8.2 secs	
Extension		14.2 secs	
Retraction		9.7 secs	
Crowd		2.7 secs	
Dump		2.8 secs	
<b>Tyres</b>		400/80-24	
<b>Braking</b>			
Service brake	Oil immersed multi-disc braking on front/rear axles		
Parking brake	Automatic Negative Handbrake		
<b>Engine</b>			
Type	PERKINS - STAGE 3B		
Cubic capacity	3400 cm <sup>3</sup>		
Power	102 HP/75 kW		
Max. torque	420 Nm - 1400 rpm		
Injection	direct		
Cooling	water		
Laden drawbar pull	9800 daN		7800 daN
<b>Transmission</b>	torque converter 4 wheel drive		hydrostatic 4 wheel drive
Reversing shift	electrohydraulic control		
Number of gears (forward/reverse)	4/4		3/2
Max. travel speed (may vary according to applicable regulations)	26 km/h		25 km/h
Steering mode	4 wheel steer - 3 Steering Modes 		
<b>Controls</b>			
JSM® Joystick multi - function Load Limiter Cut off system - EN15000 Norm			
<b>Hydraulics</b>			
Pump	gear type with priority valve - 125 l/min - 270 bar		
<b>Capacities</b>			
Hydraulic oil	175 l		
Fuel	120 l		
<b>Unladen weight (with forks)</b>	8800 kg		8900 kg
<b>Dimensions</b>			
1. Front wheel centre to carriage	1.80 m		
2. Ground clearance	0.41 m		
3. Overall length to carriage	5.86 m		
4. Wheelbase	2.88 m		
5. Rear wheel centre to rear face	1.18 m		
6. Overall width of cab	0.88 m		
7. Inside tyre width	1.87 m		
8. Overall width	2.28 m		
9. Overall width (stabilizers lowered)	2.28 m		
10. Overall height	2.42 m		
Standard forks (length x width x thickness)	1200 x 125 x 45 mm		
Turning radius (over tyres)	3.85 m		
Frame levelling	+/- 10°		
Carriage rotation (crowd/dump)	12°/114°		
<b>Noise and vibration</b>			
Noise at driving position (L <sub>90A</sub> )	82 dB		
Environmental noise (L <sub>WA</sub> )	106 dB		
Vibration to whole hand/arm	<2.5 m/s <sup>2</sup>		
Vibration on driver's body	2 m/s <sup>2</sup>		

