

# MERLO P34.7



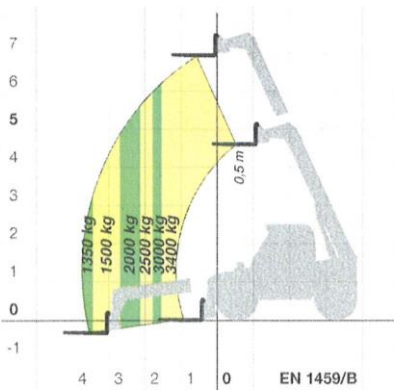
DIMENSIONS	P 34.7
A (mm)	4330
B (mm)	1025
C (mm)	2700
D (mm)	605
E (mm)	3865
F (mm)	565
H (mm)	2230
M (mm)	995
P (mm)	2475
R (mm)	3985
S (mm)	4800

## BSS – TELESCOPIC BOOM SUSPENSION

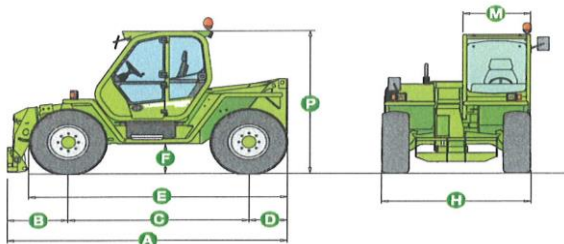
The **BSS (Boom Suspension System)** system relies on simple and reliable technology to offer effective absorption of the stress and vibrations transmitted to the load during handling and transport operations.

An hydraulic circuit with pneumatic pressure dampers controls the system, and allows the jolts of the telescopic boom to be significantly reduced while driving either at high speed or on uneven terrain.

## P 34.7 PLUS / P 34.7 TOP WITH FORKS



## P 34.7 PLUS / P 34.7 TOP



CHARACTERISTICS AND PERFORMANCE	P 34.7
Total weight unladen, with forks (kg)	6750
Maximum load capacity (kg)	3400
Maximum lift height (m)	7,1
Maximum forward reach (m)	3.7
Lift height at maximum load capacity (m)	7,1
Forward reach at maximum load capacity (m)	1.5
Load capacity at maximum lift height (kg)	3400
Load capacity at maximum forward reach (kg)	1350
Boom side-shift (mm)	-
Frame levelling (%)	-
Turbocharged engine (make/cylinder)	Deutz/4
Tier 3 engine power (kW/HP)	88/120 <sup>(1)</sup>
Speed in 1 <sup>st</sup> gear (kph)	16
Speed in 2 <sup>nd</sup> gear (kph)	40
EAS hydropneumatic suspension	-
Fuel tank capacity (l)	150
Gear pump hydraulic system (bar-l/min)	210-102 <sup>(2)</sup>
Load-Sensing hydraulic system (bar-l/min)	210-132 <sup>(2)</sup>
LS Flow-Sharing hydraulic system (bar-l/min)	-
Hydraulic oil capacity (l)	105
Electrical circuit (V)	12
Battery (Ah)	100
FOPS (ISO 3449) and ROPS (ISO 3471) cab	●
CS hydropneumatic suspension	-
Electro-mechanical joystick control	●
Electronic joystick control	-
Tac-Lock attachment coupling	●
Auxiliary boom hydraulic service	●
Two floating forks (length 1200 mm)	●
Hydrostatic transmission	●
Finger-Touch direction reversing control	●
Inching-Control	●
Permanent four-wheel drive	●
Four-wheel steering	●
Automatically locking parking brake	●
Four cab working lights (2 F + 2 R)	●
Manual battery isolator	●
Tyres	405/70-24
BSS hydropneumatic suspension	○
Shift-on-the-Go synchronised gearbox	○
Differential lock (F + R or only R)	○
Manual air conditioning system	○
Two additional working lights on the boom	○
European tractor type approval	○

● Standard, ○ Optional.

(1) Top model. 74,9 kW (102 HP) on Plus model; (2) Plus model; (3) Top model.

