

MERLO P40.17



MARSH PLANT®

NEW LANE, HAVANT, HAMPSHIRE, PO9 2LZ
Telephone 023 9248 2323

Millbrook Road, Southampton
Hampshire, SO15 0LB
Telephone 023 8052 2600
southampton@marshplant.com

www.marshplant.com

Drakes Drive, longCrendon
Aylesbury, HP18 9BA
Telephone 01844 204000
longcrendon@marshplant.com

Cabot Lane, Creekmoor, Poole
Dorset BH17 7BX
Telephone 01202 642820
poole@marshplant.com

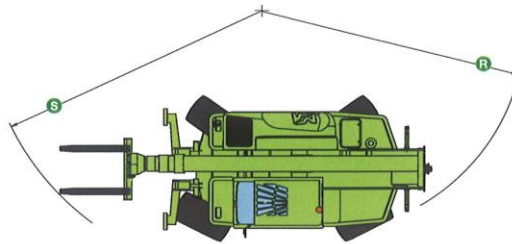
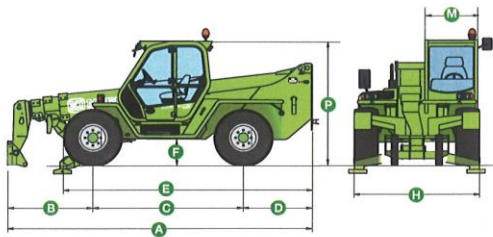
7b Watercombe Park
Gazelle Road, Yeovil
Somerset, BA20 2HL
Telephone 01935 415970
yeovil@marshplant.com

Wallingford Road, Uxbridge
Middlesex UB8 2SS
Telephone 01844 204000
longcrendon@marshplant.com

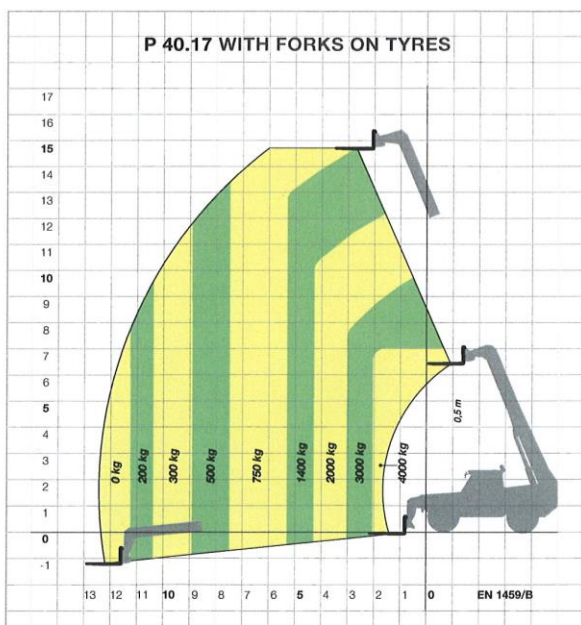
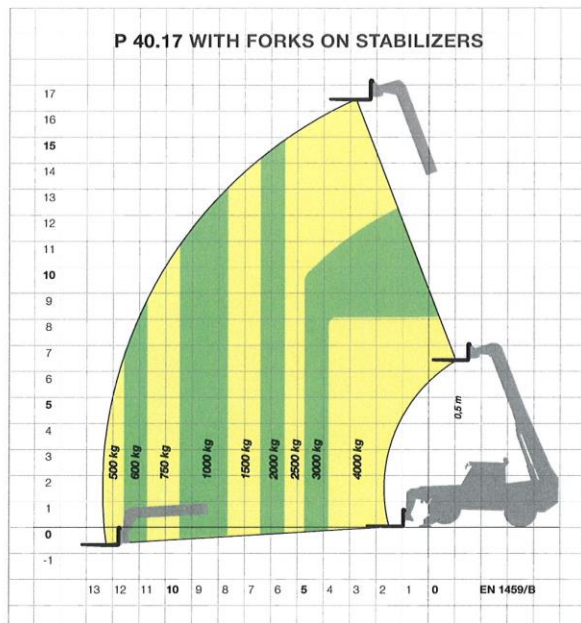
PANORAMIC P 40.17

TECHNICAL DATA

P 40.17



COMPLIANT EN 15000



DIMENSIONS			
A (mm)	5795	H (mm)	2400
B (mm)	1505	M (mm)	995
C (mm)	2875	P (mm)	2510
D (mm)	1315	R (mm)	4050
E (mm)	4790	S (mm)	5110
F (mm)	480		

*Internal length useful.

CHARACTERISTICS AND PERFORMANCE	P 40.17
Total weight unladen, with forks (kg)	10350
Maximum load capacity (kg)	4000
Maximum lift height (m)	16.7
Maximum forward reach (m)	12.5
Lift height at maximum load capacity (m)	8.1
Forward reach at max. load capacity (m)	4
Load capacity at maximum height (kg)	2500
Load capacity at max. forward reach (kg)	500
Boom side-shift (mm)	±435
Frame levelling (%)	±10
Turbo diesel engine (make/cylinder)	Perkins/4
Tier 3 engine power (kW/HP)	74.5/101
Speed in 1st gear range (kph)	16
Speed in 2nd gear range (kph)	40
Hydro-pneumatic suspension EAS	○
Hydro-pneumatic suspension BSS	-
Fuel capacity (l)	150
Hydraulic gear pump (bar-l/min)	-
Load-Sensing hydraulic pump (bar-l/min)	210-115
Hydraulic oil capacity (l)	140
Electrical circuit (V)	12
Battery (Ah)	100
FOPS (ISO 3449) and ROPS (ISO 3471) cab	●
Hydraulic lever controls	●
Electro-mechanical joystick controls	○
Electronic joystick controls	○
Tac-Lock attachment coupling	●
Auxiliary boom hydraulic service	●
Hydrostatic transmission	●
Finger-Touch direction reversing control	●
Inching Control	●
Permanent four-wheel drive	●
Automatically locking parking brake	●
Manual battery isolator	●
Tyres	405/70-24
Four cab working lights (2 f. + 2 r.)	○
Differential lock (front + rear or rear only)	○
Manual air conditioning system	○

● Standard. ○ Option.
Performance figures refer to the machine equipped with forks, operating on stabilisers.