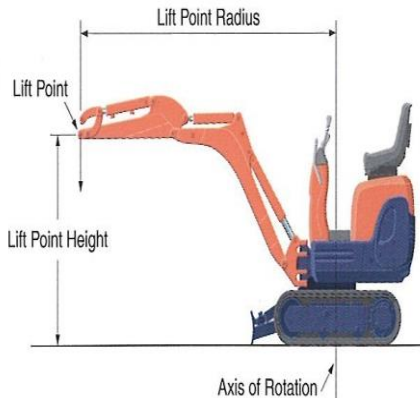
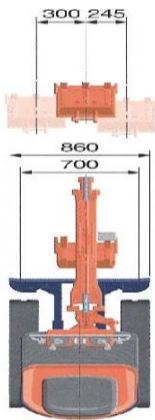
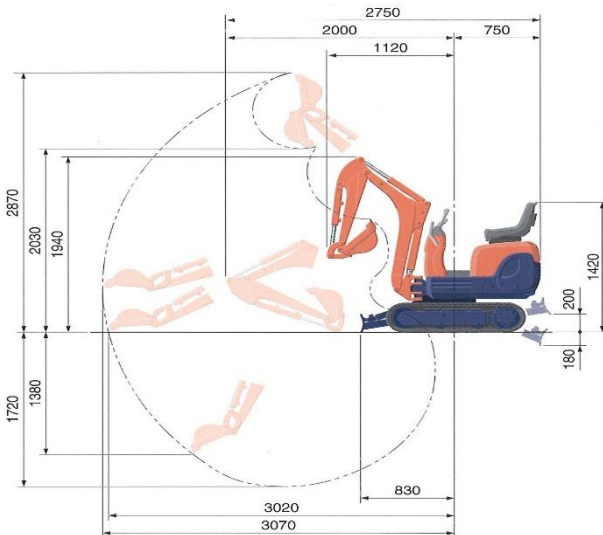


MARSH PLANT HIRE LTD

KUBOTA K008-3



WORKING RANGE



SPECIFICATIONS

			*with rubber shoe type	
Machine weight	Rubber crawler	kg	850	
Bucket capacity, std. SAE/CECE		m ³	0.022/0.018	
Bucket width	with side teeth	mm	368	
	without side teeth	mm	350	
Model			D722-BH-3	
Type			Water-cooled, diesel engine E-TVCS (Economical, ecological type)	
Engine	Output ISO90249	PS/rpm	10.2/2050	
		kW/rpm	7.4/2050	
	Number of cylinders		3	
	Bore x stroke		mm	67 x 68
	Displacement		cc	719
Overall length			mm	2750
Overall height			mm	1420
Swivelling speed			rpm	8.3
Rubber shoe width			mm	180
Tumbler distance			mm	900
Dozer size (width x height)			mm	700/860 x 200
Hydraulic pumps	P1, P2		Gear pump	
	Flow rate		ℓ/min	10.5+10.5
	Hydraulic pressure		MPa (kgf/cm ²)	16.7 (170)
Max. digging force	Arm	kN (kgf)	4.5 (460)	
	Bucket	kN (kgf)	9.8 (1000)	
Boom swing angle (left/right)			deg	55/60
Auxiliary circuit	Flow rate		ℓ/min	21.0
	Hydraulic pressure		MPa (kgf/cm ²)	170
Hydraulic reservoir			ℓ	12.5
Fuel tank capacity			ℓ	12.0
Max. travelling speed			km/h	2.0
Ground contact pressure			kPa (kgf/cm ²)	22.5 (0.23)
Ground clearance			mm	150

LIFTING CAPACITY

Lift Point Height	Lifting point radius (2.0m)			Lifting point radius (2.5m)		
	Over-front		Over-side	Over-front		Over-side
	Blade Down	Blade UP		Blade Down	Blade UP	
1.0 m	2.4 (0.24)	1.7 (0.18)	1.4 (0.14)	2.0 (0.20)	1.2 (0.12)	1.0 (0.10)
0.5 m	2.7 (0.27)	1.6 (0.17)	1.3 (0.14)	2.0 (0.20)	1.2 (0.12)	0.9 (0.10)

Please note:

* The lifting capacities are based on ISO 10567 and do not exceed 75% of the static tilt load of the machine or 87% of the hydraulic lifting capacity of the machine.

* The excavator bucket, hook, sling and other lifting accessories are not included on this table.