

KUBOTA KX36-3



MARSH PLANT[®]

NEW LANE, HAVANT, HAMPSHIRE, PO9 2LZ

Millbrook Road, Southampton
Hampshire, SO15 0LB
Telephone 023 8052 2600
southampton@marshplant.com

Telephone 023 9248 2323
www.marshplant.com

Drakes Drive, LongCrendon
Aylesbury, HP18 9BA
Telephone 01844 204000
longcrendon@marshplant.com

Cabot Lane, Creekmoor, Poole
Dorset BH17 7BX
Telephone 01202 642820
poole@marshplant.com

7b Watercombe Park
Gazelle Road, Yeovil
Somerset, BA20 2HL
Telephone 01935 415970
yeovil@marshplant.com

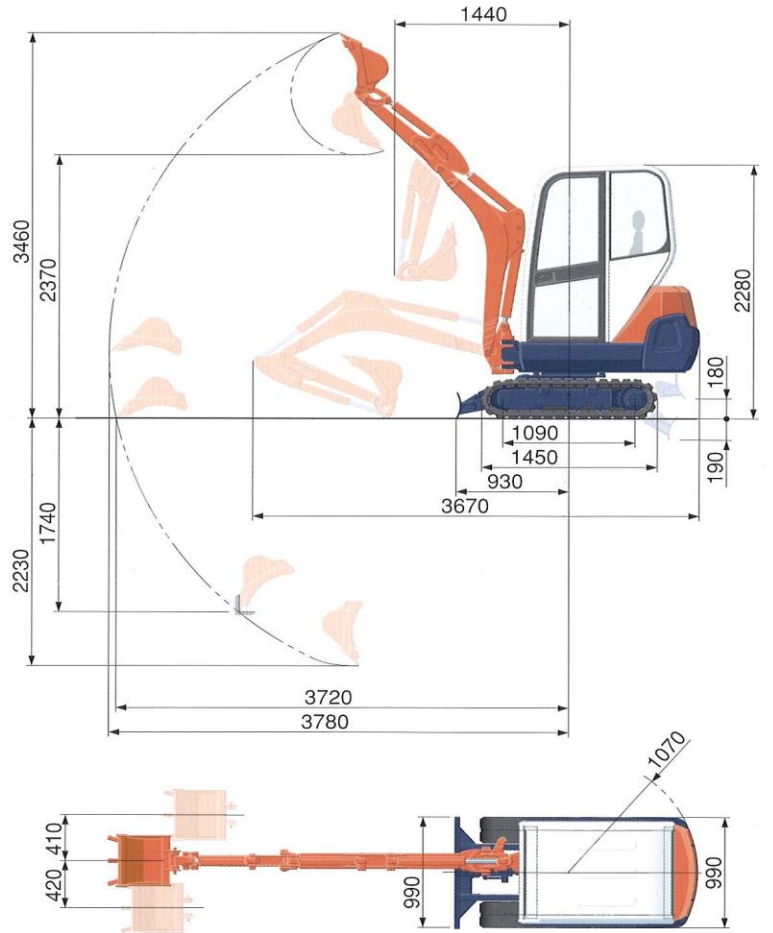
Wallingford Road, Uxbridge
Middlesex UB8 2SS
Telephone 01844 204000
uxbridge@marshplant.com

SPECIFICATIONS

*Rubber shoe type

Machine weight	Cabin	kg	1580
	Canopy	kg	1490
Bucket capacity, std. SAE/CECE		m ³	0.035
Bucket width	with side teeth	mm	422
	without side teeth	mm	402
Engine	Model		D782-BH
	Type		Water-cooled diesel engine E-TVCS
	Output ISO9249	PS/rpm	12/2300
		kW/rpm	9/2300
	Number of cylinders		3
	Bore x stroke		mm 67 x 73.6
Displacement		cc 778	
Overall length		mm	3670
Overall height	Cabin	mm	2280
	Canopy	mm	2280
Swivelling speed		rpm	9.1
Rubber shoe width		mm	230
Tumbler distance		mm	1090
Dozer size (width x height)		mm	990 x 230
Hydraulic pumps	P1,P2		Variable displacement pump
	Flow rate	ℓ/min	16.6
	Hydraulic pressure	MPa(kgf/cm ²)	20.6 (210)
	P3		Gear type
	Flow rate	ℓ/min	10.4
	Hydraulic pressure	MPa(kgf/cm ²)	20.1 (205)
Max. digging force	Arm	kN (kgf)	7.2 (735)
	Bucket	kN (kgf)	13.0 (1327)
Boom swing angle (left/right)		deg	73/50
Auxiliary circuit	Flow rate	ℓ/min	27
	Hydraulic pressure	MPa(kgf/cm ²)	20.6 (210)
Hydraulic reservoir		ℓ	27
Fuel tank capacity		ℓ	21
Max. travelling speed	Low	km/h	2.2
	High	km/h	-
Ground contact pressure	Cabin	kPa(kgf/cm ²)	26.4 (0.27)
	Canopy	kPa(kgf/cm ²)	24.7 (0.25)
Ground clearance		mm	160

WORKING RANGE



(): Long /
Unit: mm

LIFTING CAPACITY

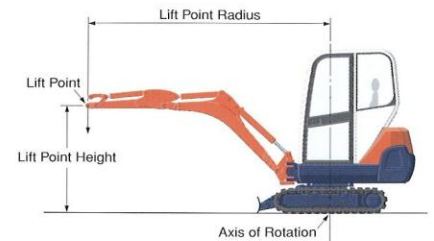
kN (ton)

Lift Point Height	Lifting point radius (2m)			Lifting point radius (3m)		
	Over-front		Over-side	Over-front		Over-side
	Blade Down	Blade Up		Blade Down	Blade Up	
1.5m	3.8 (0.39)	3.6 (0.36)	2.8 (0.28)	3.5 (0.35)	1.8 (0.19)	1.4 (0.15)
1.0m	5.4 (0.55)	3.4 (0.34)	2.6 (0.26)	3.6 (0.36)	1.8 (0.18)	1.4 (0.14)
0.5m	6.4 (0.65)	3.1 (0.32)	2.4 (0.24)	3.6 (0.36)	1.7 (0.18)	1.4 (0.14)
0m	6.3 (0.64)	3.0 (0.31)	2.3 (0.23)	3.4 (0.35)	1.7 (0.17)	1.3 (0.13)

Please note:

* The lifting capacities are based on ISO 10567 and do not exceed 75% of the static tilt load of the machine or 87% of the hydraulic lifting capacity of the machine.

* The excavator bucket, hook, sling and other lifting accessories are not included on this table.



* Working ranges are with Kubota standard bucket, without quick coupler.

* Specifications are subject to change without notice for purpose of improvement.