

# KUBOTA U17-3α



## **MARSH PLANT<sup>®</sup>**

NEW LANE, HAVANT, HAMPSHIRE, PO9 2LZ

Millbrook Road, Southampton  
Hampshire, SO15 0LB  
Telephone 023 8052 2600  
[southampton@marshplant.com](mailto:southampton@marshplant.com)

Telephone 023 9248 2323  
[www.marshplant.com](http://www.marshplant.com)

Drakes Drive, LongCrendon  
Aylesbury, HP18 9BA  
Telephone 01844 204000  
[longcrendon@marshplant.com](mailto:longcrendon@marshplant.com)

Cabot Lane, Creekmoor, Poole  
Dorset BH17 7BX  
Telephone 01202 642820  
[poole@marshplant.com](mailto:poole@marshplant.com)

7b Watercombe Park  
Gazelle Road, Yeovil  
Somerset, BA20 2HL  
Telephone 01935 415970  
[yeovil@marshplant.com](mailto:yeovil@marshplant.com)

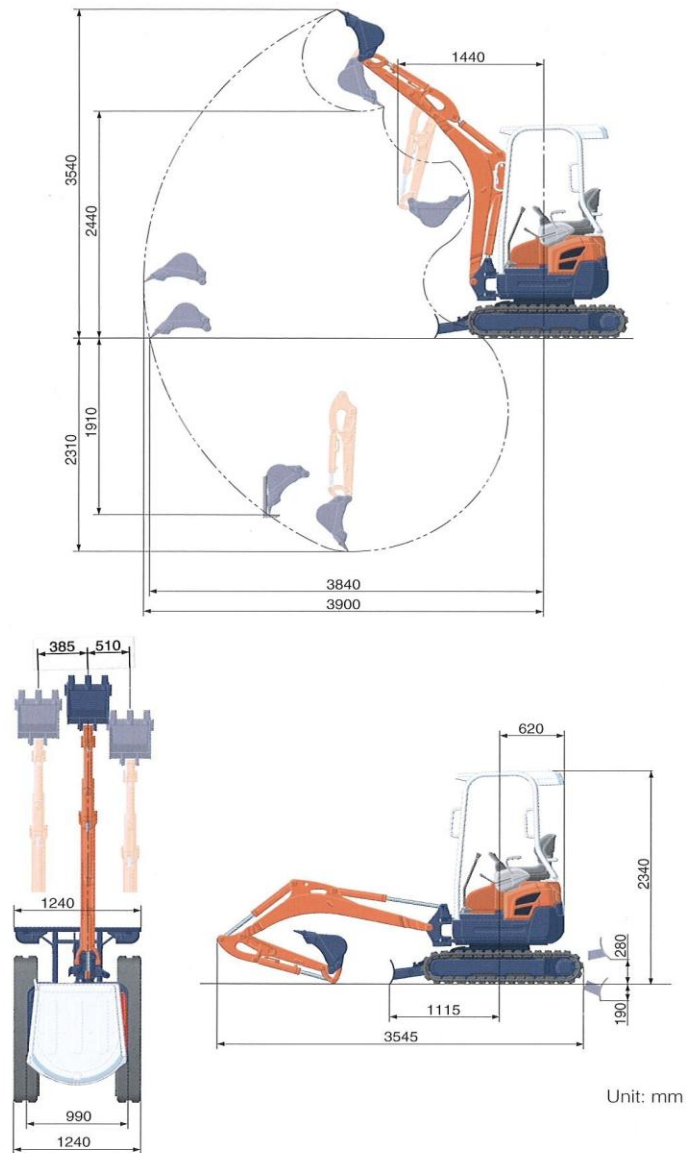
Wallingford Road, Uxbridge  
Middlesex UB8 2SS  
Telephone 01844 204000  
[uxbridge@marshplant.com](mailto:uxbridge@marshplant.com)

# SPECIFICATIONS

\*Rubber shoe type

Machine weight	kg	1650		
Bucket capacity, std. SAE/CECE	m <sup>3</sup>	0.04		
Bucket width	with side teeth	mm	450	
	without side teeth	mm	400	
Engine	Model	D902		
	Type	Water cooled		
	Output ISO9249	PS/rpm	16/2300	
		kW/rpm	11.8/2300	
	Number of cylinders	3		
	Bore × Stroke	mm	72 × 73.6	
Displacement	cc	898		
Overall length	mm	3545		
Overall height	mm	2340		
Swivelling speed	rpm	9.1		
Rubber shoe width	mm	230		
Tumbler distance	mm	1230		
Dozer size (width × height)	mm	990/1240 × 265		
Hydraulic pumps	P1, P2	Variable displacement pump		
	Flow rate	ℓ/min	17.3 + 17.3	
	Hydraulic pressure	MPa (kgf/cm <sup>2</sup> )	21.6	
	P3	Gear pump		
	Flow rate	ℓ/min	10.4	
Max. digging force	Arm	kN (kgf)	8.5 (865)	
	Bucket	kN (kgf)	15.2 (1550)	
Boom swing angle (left/right)	deg	65/58		
Auxiliary circuit	Flow rate	ℓ/min	27	
	Hydraulic pressure	MPa (kgf/cm <sup>2</sup> )	18.6	
Hydraulic reservoir	ℓ	21		
Fuel tank capacity	ℓ	19		
Max. travelling speed	Low	km/h	2.2	
	High	km/h	4.1	
Ground contact pressure	kPa	26.1		
Ground clearance	mm	150		

# WORKING RANGE



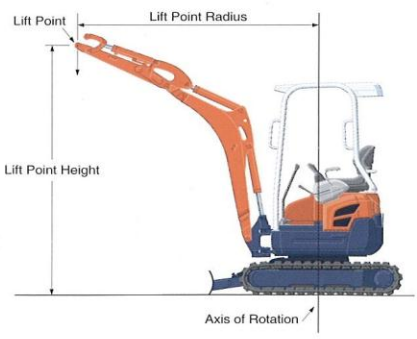
Unit: mm

# LIFTING CAPACITY

Lift Point Height	kN (ton)								
	Lift point radius (1.5m)			Lift point radius (2m)			Max. lift point radius (3m)		
	Over-front		Over-side	Over-front		Over-side	Over-front		Over-side
Blade Down	Blade Up	Blade Down		Blade Up	Blade Down		Blade Up		
2m	-	-	-	3.1 (0.32)	3.1 (0.32)	3.1 (0.32)	-	-	-
1.5m	5.2 (0.53)	5.2 (0.53)	5.2 (0.53)	4.5 (0.46)	4.0 (0.41)	3.7 (0.38)	3.6 (0.37)	2.1 (0.22)	2.0 (0.20)
0.5m	-	-	-	6.9 (0.70)	3.6 (0.37)	3.3 (0.34)	3.8 (0.39)	2.0 (0.21)	1.9 (0.19)
0m	-	-	-	6.6 (0.67)	3.5 (0.36)	3.3 (0.33)	3.6 (0.37)	2.0 (0.20)	1.9 (0.19)
-0.5m	8.1 (0.83)	5.5 (0.56)	5.0 (0.51)	5.8 (0.60)	3.5 (0.36)	3.2 (0.33)	3.2 (0.33)	2.0 (0.20)	1.8 (0.19)
-1.5m	5.3 (0.54)	5.3 (0.54)	5.2 (0.53)	3.7 (0.37)	3.6 (0.37)	3.3 (0.34)	-	-	-

Please note:

- \* Over-side figures shown are with crawler fully extended.
- \* The lifting capacities are based on ISO 10567 and do not exceed 75% of the static tilt load of the machine or 87% of the hydraulic lifting capacity of the machine.
- \* The excavator bucket, hook, sling and other lifting accessories are not included on this table.



- \* Working ranges are with Kubota standard bucket, without quick coupler.
- \* Specifications are subject to change without notice for purpose of improvement.

★ All images shown are for brochure purposes only.  
When operating the excavator, wear clothing and equipment in accordance to local legal and safety regulations.