

KUBOTA U48.4



MARSH PLANT®

NEW LANE, HAVANT, HAMPSHIRE, PO9 2LZ
Telephone 023 9248 2323

Millbrook Road, Southampton
Hampshire, SO15 0LB
Telephone 023 8052 2600
southampton@marshplant.com

www.marshplant.com

Drakes Drive, longCrendon
Aylesbury, HP18 9BA
Telephone 01844 204000
longcrendon@marshplant.com

Cabot Lane, Creekmoor, Poole
Dorset BH17 7BX
Telephone 01202 642820
poole@marshplant.com

7b Watercombe Park
Gazelle Road, Yeovil
Somerset, BA20 2HL
Telephone 01935 415970
yeovil@marshplant.com

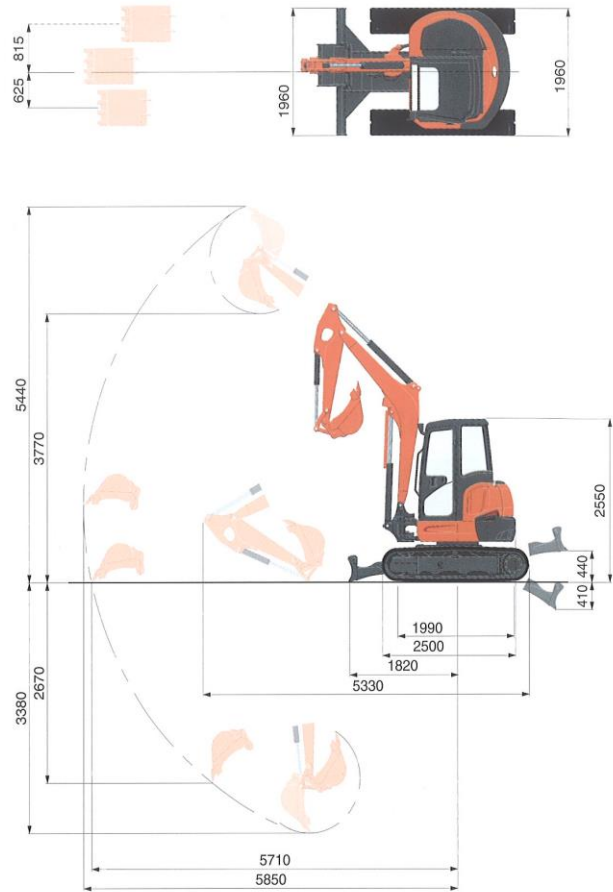
Wallingford Road, Uxbridge
Middlesex UB8 2SS
Telephone 01844 204000
longcrendon@marshplant.com

SPECIFICATIONS

*Rubber shoe type/JPN bucket

Operating weight (cabin/with 115 kg bucket)	kg	4775	
Bucket capacity, std. SAE/CECE	m ³	0.14/0.12	
Bucket width	With side teeth	mm 600	
	Without side teeth	mm 550	
Engine	Model	V2607-DI	
	Type	Water cooled, diesel engine	
	Output (ISO 9249 NET)	kW/rpm	28.8/2200
		PS/rpm	40.5/2200
	Number of cylinders	4	
	Bore × Stroke	mm	87 × 110
Displacement	cc	2615	
Overall length	mm	5330	
Overall height	mm	2550	
Swivelling speed	rpm	9.3	
Rubber shoe width	mm	400	
Tumbler distance	mm	1990	
Dozer size (width × height)	mm	1960 × 410	
Hydraulic pumps	P1	Variable displacement pump	
	Flow rate	ℓ/min 118.8	
	Hydraulic pressure	MPa (kgf/cm ²) 24.5 (250)	
Max. digging force	Arm	kN (kgf) 22.0 (2245)	
	Bucket	kN (kgf) 33.0 (3360)	
Boom swing angle (left/right)	deg	70/55	
Auxiliary circuit (SP1)	Max flow rate	ℓ/min 70	
	Max hydraulic pressure	MPa (kgf/cm ²) 20.6 (210)	
Auxiliary circuit (SP2)	Max flow rate	ℓ/min 37	
	Max hydraulic pressure	MPa (kgf/cm ²) 20.6 (210)	
Hydraulic reservoir	tank/full	ℓ 45/79	
Fuel tank capacity	ℓ	68	
Max. travelling speed	Low	km/h 2.8	
	High	km/h 4.9	
Ground contact pressure	kPa (kgf/cm ²)	27.0 (0.275)	
Ground clearance	mm	310	

WORKING RANGE



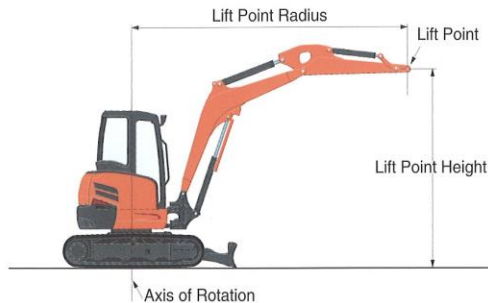
1450 mm arm
Unit: mm

LIFTING CAPACITY

Cabin, Rubber version

kN (ton)

Lift Point Height	Lift point radius (min.)			Lift point radius (1.5m)			Lift point radius (2m)			Lift point radius (3m)			Lift point radius (4m)			Lift point radius (max.)		
	Over-front		Over-side	Over-front		Over-side	Over-front		Over-side	Over-front		Over-side	Over-front		Over-side	Over-front		Over-side
	Blade Down	Blade Up		Blade Down	Blade Up		Blade Down	Blade Up		Blade Down	Blade Up		Blade Down	Blade Up		Blade Down	Blade Up	
3m																		
2m										12.1 (1.24)	12.1 (1.24)	10.1 (1.03)	9.3 (0.95)	7.6 (0.78)	6.5 (0.66)	8.4 (0.86)	5.4 (0.55)	4.7 (0.47)
1m										16.4 (1.67)	11.3 (1.15)	9.3 (0.95)	10.9 (1.11)	7.3 (0.74)	6.2 (0.63)	8.7 (0.89)	5.2 (0.53)	4.4 (0.45)
0m										17.9 (1.83)	10.9 (1.11)	8.9 (0.91)	11.8 (1.20)	7.1 (0.72)	6.0 (0.61)	9.1 (0.92)	5.4 (0.55)	4.6 (0.47)
-1m	20.4 (2.08)	20.4 (2.08)	20.4 (2.08)	21.5 (2.19)	22.9 (2.34)	17.5 (1.78)	26.5 (2.70)	22.9 (2.34)	17.5 (1.78)	16.7 (1.70)	10.8 (1.10)	8.9 (0.91)	11.1 (1.13)	7.0 (0.71)	5.9 (0.60)	9.4 (0.96)	6.2 (0.63)	5.3 (0.54)
-2m	36.8 (3.75)	36.8 (3.75)	36.8 (3.75)	29.3 (2.99)	19.9 (2.03)	18.0 (1.83)	19.9 (2.03)	19.9 (2.03)	18.0 (1.83)	12.1 (1.24)	11.1 (1.13)	9.1 (0.93)						
-3m																		



Please note:

- * The lifting capacities are based on ISO10567 and do not exceed 75% of the static tilt load of the machine or 87% of the hydraulic lifting capacity of the machine.
- * The excavator bucket, hook, sling and other lifting accessories are not included on this table.
- * Standards EN474-1 and EN474-5 require the machine to be fitted with a safety valve on the boom cylinder and an overload warning buzzer for object handling operations.

- * Working ranges are with Kubota standard bucket, without quick coupler.
- * Specifications are subject to change without notice for purpose of improvement.