

# KUBOTA U50-3a



## MARSH PLANT®

NEW LANE, HAVANT, HAMPSHIRE, PO9 2LZ

Telephone 023 9248 2323

[www.marshplant.com](http://www.marshplant.com)

Millbrook Road, Southampton  
Hampshire, SO15 0LB  
Telephone 023 8052 2600  
[southampton@marshplant.com](mailto:southampton@marshplant.com)

Cabot Lane, Creekmoor, Poole  
Dorset BH17 7BX  
Telephone 01202 642820  
[poole@marshplant.com](mailto:poole@marshplant.com)

7b Watercombe Park  
Gazelle Road, Yeovil  
Somerset, BA20 2HL  
Telephone 01935 415970  
[yeovil@marshplant.com](mailto:yeovil@marshplant.com)

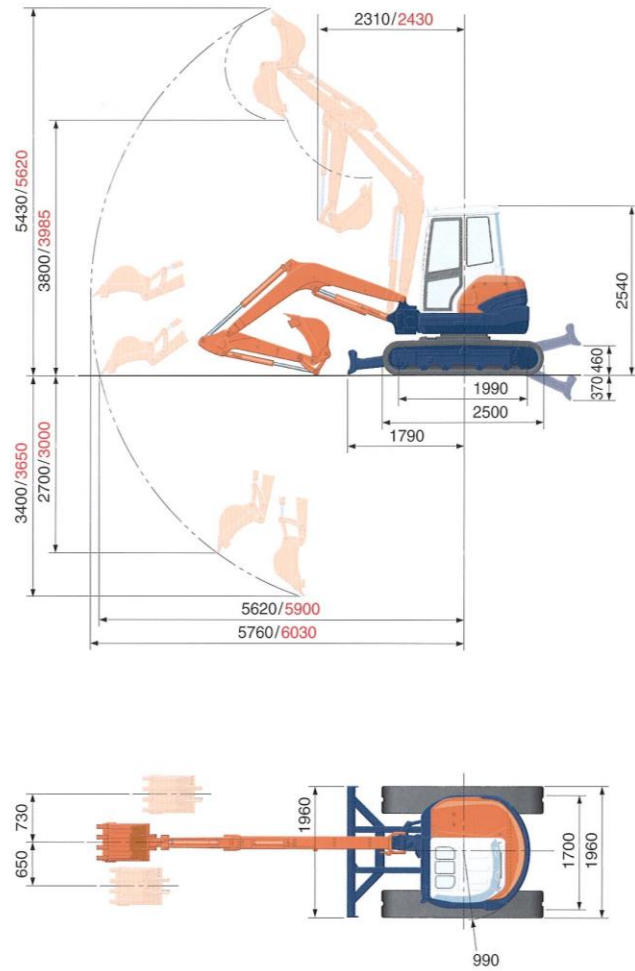
Drakes Drive, longCrendon  
Aylesbury, HP18 9BA  
Telephone 01844 204000  
[longcrendon@marshplant.com](mailto:longcrendon@marshplant.com)

Wallingford Road, Uxbridge  
Middlesex UB8 2SS  
Telephone 01844 204000  
[longcrendon@marshplant.com](mailto:longcrendon@marshplant.com)

## SPECIFICATIONS

		*Rubber shoe type		
Model		U45-3 $\alpha$	U50-3 $\alpha$	
Machine weight	Cabin	kg	4500   4890	
Bucket capacity, std. SAE/CECE		m <sup>3</sup>	0.14/0.12	
Bucket width	With side teeth	mm	600	
	Without side teeth	mm	550	
Model		V2203-M-EBH-2-N		
Type		Water-cooled, diesel engine E-TVCS (Economical, ecological type)		
Engine	Output ISO9249	PS/rpm	40/2250	
		kW/rpm	29.4/2250	
	Number of cylinders		4	
	Bore x Stroke		mm	87 x 92.4
	Displacement		cc	2197
Overall length		mm	5340   5385	
Overall height	Cabin	mm	2540	
Swivelling speed		rpm	9.1	
Rubber shoe width		mm	400	
Crawler distance		mm	1990	
Dozer size (width x height)		mm	1960 x 390	
Hydraulic pumps	P1	Variable displacement pump		
	Flow rate	ℓ/min	121.5	
	Hydraulic pressure	MPa (kgf/cm <sup>2</sup> )	23.5 (240)	
Max. digging force	Arm	kN (kgf)	23.0 (2350)   20.2 (2060)	
	Bucket	kN (kgf)	32.9 (3350)	
Boom swing angle (left/right)		deg	80/50	
Auxiliary circuit	Flow rate	ℓ/min	73	
	Hydraulic pressure	MPa (kgf/cm <sup>2</sup> )	23.5 (240)	
Hydraulic reservoir		ℓ	44	
Fuel tank capacity		ℓ	70	
Max. travelling speed	Low	km/h	2.7   2.3	
	High	km/h	4.8   4.6	
Ground contact pressure	Cabin	kPa (kgf/cm <sup>2</sup> )	25.8 (0.26)   27.7 (0.28)	
Ground clearance		mm	320	

## WORKING RANGE



Unit: mm  
U45-3 $\alpha$   
U50-3 $\alpha$

## LIFTING CAPACITY

U45-3 $\alpha$  kN (ton)

Lift Point Height	Lifting point radius (3m)			Lifting point radius (4m)		
	Over-front		Over-side	Over-front		Over-side
	Blade Down	Blade UP		Blade Down	Blade UP	
3m	-	-	-	9.3 (0.95)	8.5 (0.87)	7.5 (0.76)
2m	14.0 (1.42)	13.0 (1.33)	11.2 (1.14)	10.6 (1.08)	8.3 (0.84)	7.2 (0.74)
1m	18.3 (1.87)	12.1 (1.23)	10.3 (1.05)	12.2 (1.24)	7.9 (0.81)	6.9 (0.70)
0m	19.6 (2.00)	11.7 (1.19)	9.9 (1.01)	13.0 (1.33)	7.6 (0.78)	6.6 (0.68)

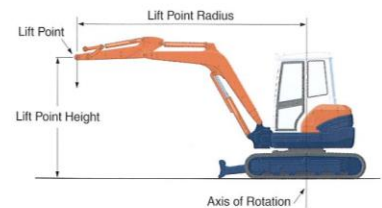
U50-3 $\alpha$  kN (ton)

Lift Point Height	Lifting point radius (3m)			Lifting point radius (4m)		
	Over-front		Over-side	Over-front		Over-side
	Blade Down	Blade UP		Blade Down	Blade UP	
3m	-	-	-	8.2 (0.84)	8.2 (0.84)	8.2 (0.84)
2m	12.1 (1.24)	12.1 (1.24)	12.1 (1.24)	9.6 (0.98)	9.6 (0.98)	9.1 (0.92)
1m	16.8 (1.72)	14.1 (1.44)	13.0 (1.32)	11.4 (1.16)	9.2 (0.94)	8.6 (0.88)
0m	19.0 (1.94)	13.5 (1.37)	12.4 (1.26)	12.5 (1.28)	8.8 (0.90)	8.3 (0.85)

Please note:

\* The lifting capacities are based on ISO 10567 and do not exceed 75% of the static tilt load of the machine or 87% of the hydraulic lifting capacity of the machine.

\* The excavator bucket, hook, sling and other lifting accessories are not included on this table.



\* Working ranges are with Kubota standard bucket, without quick coupler.

\* Specifications are subject to change without notice for purpose of improvement.