

MANITOU MT 1335



MARSH PLANT[®]

NEW LANE, HAVANT, HAMPSHIRE, PO9 2LZ

Telephone 023 9248 2323

www.marshplant.com

Millbrook Road, Southampton
Hampshire, SO15 0LB
Telephone 023 8052 2600
southampton@marshplant.com

Drakes Drive, longCrendon
Aylesbury, HP18 9BA
Telephone 01844 204000
longcrendon@marshplant.com

Cabot Lane, Creekmoor, Poole
Dorset BH17 7BX
Telephone 01202 642820
poole@marshplant.com

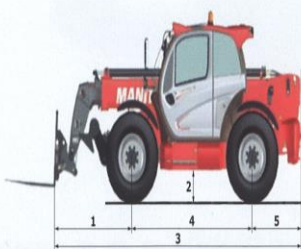
7b Watercombe Park
Gazelle Road, Yeovil
Somerset, BA20 2HL
Telephone 01935 415970
yeovil@marshplant.com

Wallingford Road, Uxbridge
Middlesex UB8 2SS
Telephone 01844 204000
longcrendon@marshplant.com

MT1335

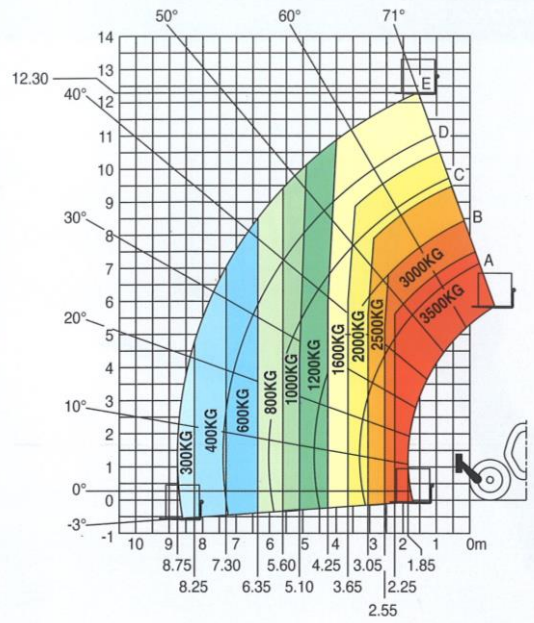
MT 1335 MT 1335 H MT 1335 HA

Lifting		
Max. capacity	3500 kg	
Max. lifting height	12.55 m	
Max. outreach	8.75 m	
Break-out force with bucket	6400 daN	
Unladen time		
Lifting	9.8 secs	
Lowering	8.2 secs	
Extension	14.2 secs	
Retraction	9.7 secs	
Crowd	2.7 secs	
Dump	2.8 secs	
Tyres		
400/80-24		
Braking		
Service brake	Oil immersed multi-disc braking on front/rear axles	
Parking brake	Automatic Negative Handbrake	
Engine		
PERKINS - STAGE 3B		
Type	854E-34TA	
Cubic capacity	3400 cm ³	
Power	102 HP/75 kW	
Max. torque	420 Nm - 1400 rpm	
Injection	direct	
Cooling	water	
Laden drawbar pull	9800 daN	7800 daN
	torque converter	hydrostatic
Transmission		
4 wheel drive		
Reversing shift	electrohydraulic control	
Number of gears (forward/reverse)	4/4	3/2
Max. travel speed (may vary according to applicable regulations)	26 km/h	25 km/h
Steering mode		
4 wheel steer - 3 Steering Modes		
JSM [®] Joystick multi - function Load Limiter Cut off system - EN15000 Norm		
Controls		
Hydraulics		
Pump	gear type with priority valve - 125 l/min - 270 bar	
Capacities		
Hydraulic oil	175 l	
Fuel	120 l	
Unladen weight (with forks)		
	8800 kg	8900 kg
Dimensions		
1. Front wheel centre to carriage	1.80 m	
2. Ground clearance	0.41 m	
3. Overall length to carriage	5.86 m	
4. Wheelbase	2.88 m	
5. Rear wheel centre to rear face	1.18 m	
6. Overall width of cab	0.88 m	
7. Inside tyre width	1.87 m	
8. Overall width	2.28 m	
9. Overall width (stabilizers lowered)	2.28 m	
10. Overall height	2.42 m	
Standard forks (length x width x thickness)	1200 x 125 x 45 mm	
Turning radius (over tyres)	3.85 m	
Frame levelling	+/- 10°	
Carriage rotation (crowd/dump)	12°/114°	
Noise and vibration		
Noise at driving position (LpA)	82 dB	
Environmental noise (LwA)	106 dB	
Vibration to whole hand/arm	<2.5 m/s ²	
Vibration on driver's body	2 m/s ²	

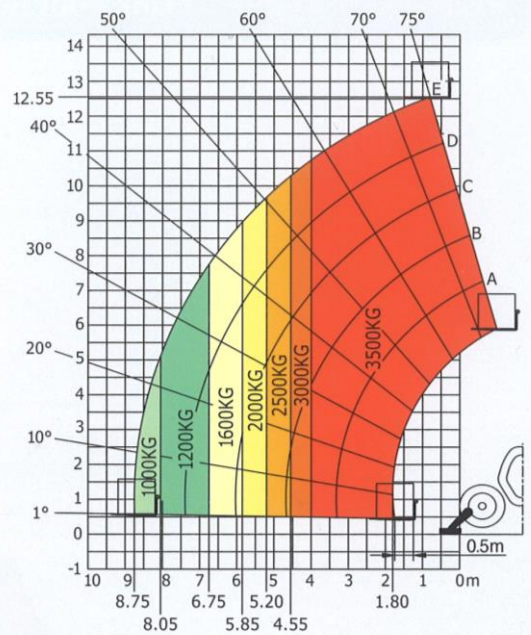


FT030EN_C_0413_MT1335

Machine on tyres with forks



Machine on stabilizers with forks



Machine on stabilizers with platform

(MT 1335 HA versions)

