

# MANITOU MT 732



## MARSH PLANT®

NEW LANE, HAVANT, HAMPSHIRE, PO9 2LZ  
Telephone 023 9248 2323

Millbrook Road, Southampton  
Hampshire, SO15 0LB  
Telephone 023 8052 2600  
[southampton@marshplant.com](mailto:southampton@marshplant.com)

[www.marshplant.com](http://www.marshplant.com)

Drakes Drive, longCrendon  
Aylesbury, HP18 9BA  
Telephone 01844 204000  
[longcrendon@marshplant.com](mailto:longcrendon@marshplant.com)

Cabot Lane, Creekmoor, Poole  
Dorset BH17 7BX  
Telephone 01202 642820  
[poole@marshplant.com](mailto:poole@marshplant.com)

7b Watercombe Park  
Gazelle Road, Yeovil  
Somerset, BA20 2HL  
Telephone 01935 415970  
[yeovil@marshplant.com](mailto:yeovil@marshplant.com)

Wallingford Road, Uxbridge  
Middlesex UB8 2SS  
Telephone 01844 204000  
[longcrendon@marshplant.com](mailto:longcrendon@marshplant.com)

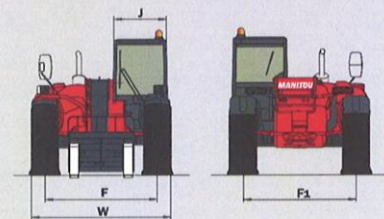
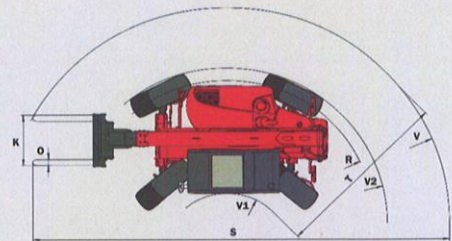
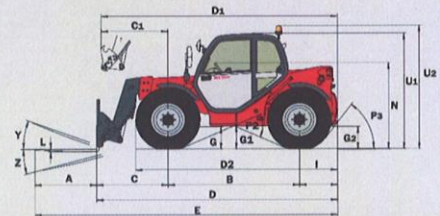
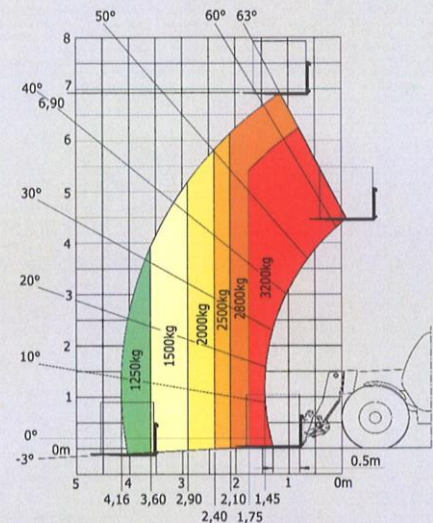
# MT 732

		MT 732
	<b>Lifting capacity</b> at 500 mm from forks heels	3200 kg
	Break-out force (ISO 8313)	7400 daN
	<b>Lifting height</b>	6.90 m
	<b>Time: laden/unladen (in sec)</b>	
	Lifting	7.20/7.20
	Lowering	5.50/5.80
	Extension	6.50/6.50
	Retraction	5.40/5.90
	Dump	2.80
	<b>Tyres</b>	400/80-24 156A8 IND TL PCL
	<b>Forks (mm)</b>	
	Length x width x thickness	1200 x 125 x 45
	<b>Braking</b>	multiple-disk hydraulic brakes with oil bath on front and rear axles
	<b>PERKINS STAGE III A Engine</b>	1104D-44T
	Cubic capacity	4 cyl. - 4400 cm <sup>3</sup>
	Power at 2200 rpm (ISO/TR 14396)	95 HP/70 kW
	Max. torque at 1400 rpm (ISO/TR 14396)	392 Nm
	Injection	direct
	Cooling	water
		<b>Transmission</b>
Gearbox		electro-hydraulic
Number of gears (forward/reverse)		4/4
Max. travel speed		25 kph*
	<b>Hydraulics</b>	
	Gear pump	105 l/min - 250 bar
	<b>Capacities</b>	
	Cooling system	18.50 l
	Engine oil	11 l
	Hydraulic oil	128 l
	Fuel	120 l
	<b>Unladen weight (with forks)</b>	7330 kg
	<b>Width overall</b>	2.26 m
	<b>Height overall</b>	2.30 m
	<b>Length overall</b>	4.77 m
	<b>Turning radius (outer wheels)</b>	3.67 m
	<b>Ground clearance</b>	0.45 m
	<b>Drawbar pull</b>	9280 daN
	<b>Noise at driving position (LpA)</b>	78 dB
	<b>Environmental noise (LWA)</b>	105 dB
	<b>Vibration to whole hand/arm</b>	<2.50 m/s <sup>2</sup>
	<b>Vibration on driver's body</b>	1.015 m/s <sup>2</sup>

mm	D2	3894	I	763	P3	53°	V1	1250	
A	1200	E	5966.6	J	865	R	3460	V2	3667
B	2560	F	1846	K	1040	S	7590.6	W	2260
C	1443.6	F1	1846	L	45	T	3555	Y	11.9°
C1	1537	G	455	N	1690	U1	2300	Z	113.8°
D	4766.6	G1	440	O	125	U2	2550		
D1	4860	G2	440	P2	47.5°	V	4805		

## Maximum height reach: 1.15 m

As per standard EN 1459 annex B



This brochure describes versions and configuration options for Manitou products which may be fitted with different equipment. The equipment described in this brochure may be standard, optional or not available depending on version. Manitou reserves the right to change the specifications shown and described at any time and without prior warning. The manufacturer is not liable for the specifications given. For more information, contact your Manitou dealer. Non-contractual document. Product descriptions may differ from actual products. List of specifications non-exhaustive. The logos and visual identity of the company are the property of Manitou and may not be used without authorisation. All rights reserved. The photos and diagrams contained in this brochure are provided for information only.

MANITOU BF SA - Limited company with board of directors - Share capital: 39,547,824 Euros - 857 802 508 RCS Nantes

\* May vary according to applicable regulations

FT021EN\_A\_0412\_MT732

