

MERLO P38.13



MARSH PLANT®

NEW LANE, HAVANT, HAMPSHIRE, PO9 2LZ

Telephone 023 9248 2323

www.marshplant.com

Millbrook Road, Southampton

Hampshire, SO15 0LB

Telephone 023 8052 2600

southampton@marshplant.com

Drakes Drive, longCrendon

Aylesbury, HP18 9BA

Telephone 01844 204000

longcrendon@marshplant.com

Cabot Lane, Creekmoor, Poole

Dorset BH17 7BX

Telephone 01202 642820

poole@marshplant.com

7b Watercombe Park

Gazelle Road, Yeovil

Somerset, BA20 2HL

Telephone 01935 415970

yeovil@marshplant.com

Wallingford Road, Uxbridge

Middlesex UB8 2SS

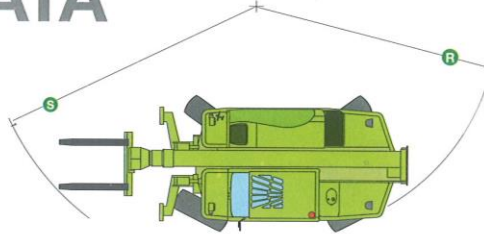
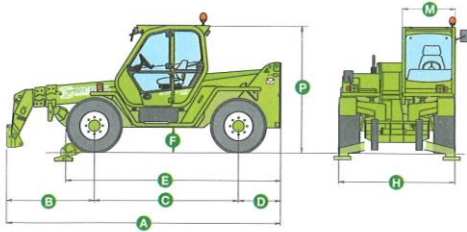
Telephone 01844 204000

longcrendon@marshplant.com

PANORAMIC P 38.13

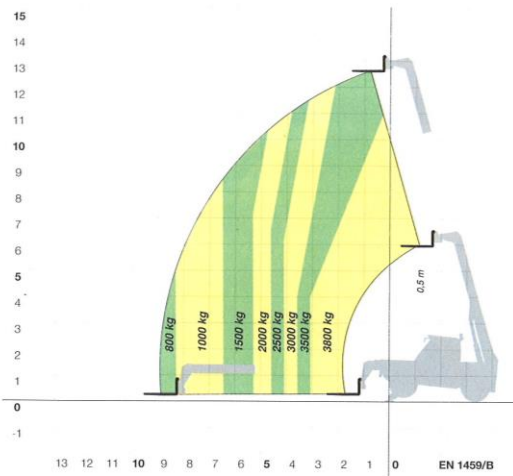
TECHNICAL DATA

P 38.13 / P 38.13 PLUS

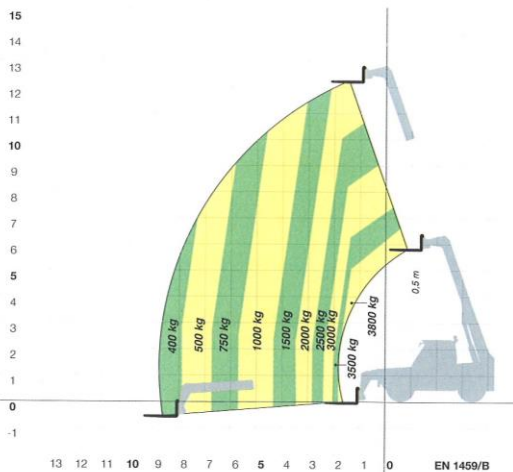


COMPLIANT EN 15000

P 38.13 WITH FORKS ON STABILIZERS



P 38.13 WITH FORKS ON TYRES



DIMENSIONS

A (mm)	5240	H (mm)	2220
B (mm)	1675	M (mm)	995
C (mm)	2750	P (mm)	2440
D (mm)	815	R (mm)	3920
E (mm)	4100	S (mm)	4940
F (mm)	480		

*Internal length useful.

CHARACTERISTICS AND PERFORMANCE

	P 38.13
Total weight unladen, with forks (kg)	8650
Maximum load capacity (kg)	3800
Maximum lift height (m)	12.6
Maximum forward reach (m)	8.6
Lift height at maximum load capacity (m)	11
Forward reach at max. load capacity (m)	3
Load capacity at maximum height (kg)	3500
Load capacity at max. forward reach (kg)	800
Boom side-shift (mm)	±340
Frame levelling (%)	±10
Turbo diesel engine (make/cylinder)	Perkins/4
Tier 3 engine power (kW/HP)	74.5/101 ⁽¹⁾
Speed in 1st gear range (kph)	14 ⁽¹⁾
Speed in 2nd gear range (kph)	40 ⁽¹⁾
Hydro-pneumatic suspension EAS	○ ⁽²⁾
Hydro-pneumatic suspension BSS	○ ⁽²⁾
Fuel capacity (l)	150
Hydraulic gear pump (bar-l/min)	-
Load-Sensing hydraulic pump (bar-l/min)	210-108
Hydraulic oil capacity (l)	105
Electrical circuit (V)	12
Battery (Ah)	100
FOPS (ISO 3449) and ROPS (ISO 3471) cab	●
Hydraulic lever controls	●
Electro-mechanical joystick controls	○
Electronic joystick controls	○
Tac-Lock attachment coupling	●
Auxiliary boom hydraulic service	●
Hydrostatic transmission	●
Finger-Touch direction reversing control	●
Inching Control	●
Permanent four-wheel drive	●
Automatically locking parking brake	●
Manual battery isolator	●
Tyres	405/70-20
Four cab working lights (2 f. + 2 r.)	○
Differential lock (front + rear or rear only)	○
Manual air conditioning system	○

● Standard. ○ Option.

(1) Plus version only. The basic model has a speed of 7-25 kph and a engine of 62.5 kW (85 HP); (2) BSS and EAS suspension can not be fitted together; (3) Optional endowments on some models.